

MODEL 76071

Model 76071 is a tension-compression Force Transducer with the ultimate solution for some force measurement.

The shear web design provides excellent performance even when the side force inevitably exists in normal operations.

76071 is constructed of alloy steel and fully potted with special chemical compounds to IP67 providing excellent protection against moisture and humidity.

Ideally suited for force measurement and a wide range of other industrial applications.



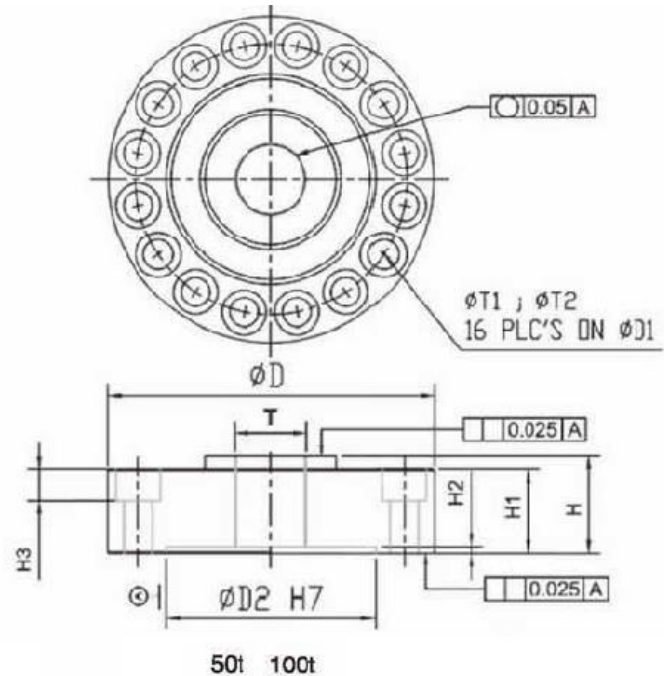
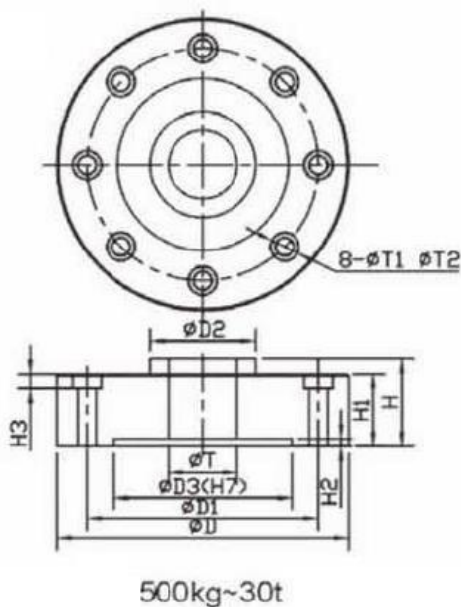
FEATURES

- Rated Capacities: 500kg, 1t, 1.5t, 2.5t, 5t, 10t, 20t, 25t, 30t, 50t, 100t
- Compact size with low profile
- Low deflection for high output
- Constructed of high quality alloy tool steel
- Off center load compensated

APPLICATIONS

- Testing machines
- Universal material tester
- Tensile/pulling force measurement

DIMENSIONS mm



CAPACITY		D	D1	D2	D3	H	H1	H2	T	T1	T2	H3
500kg/1t	mm	90	78	22	65	43	40	3.0	M12 x 1.75	6.6	10.5	6.0
1.5/2.5t	mm	105	89.0	32.0	75.0	35.0	32	3.0	M16 x 2	7.2	10.5	7.2
5t/10t	mm	138	110.0	44.0	88.0	46.0	41.0	3.0	M27 x 2	13.2	19.0	12
20t/25t/30t	mm	165	130.0	55.0	96.0	50.0	41.0	3.0	M36 x 2	21.0	31.0	20
50t	mm	234.0	194	150	---	60	55	4.7	M52 x 2-6H	21	32	22
100t	mm	258.0	218	174	---	60	57	3	M76 x 2	21	32	22

SPECIFICATIONS

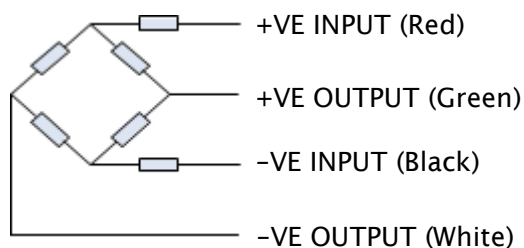
PARAMETER	VALUE		UNIT
Rated capacity—R.C. (Emax)	0.5, 1, 1.5, 2.5, 5, 10, 20, 25, 30	50, 100	t
Rated output—R.O.	3.0		mV/V
Rated output tolerance	0.25		±% of rated output
Zero balance	1		±% of rated output
Hysteresis	0.05	0.10	±% of rated output
Non-linearity	0.05	0.10	±% of rated output
Non-repeatability	0.02		±% of rated output
Creep error (20 minutes)	0.03		±% of rated output
Zero return	0.03		±% of rated output
Temp. Effect/°C on Zero	0.0026		±% of rated output/°C
Temp. Effect/°C on Span	0.0015		±% of applied load/°C
Temperature range, compensated	-10 to +40		°C
Temperature range, safe	-20 to +60		°C
Maximum safe central overload	150		% of R.C.
Ultimate central overload	300		% of R.C.
Excitation, recommended	10		VDC or VAC RMS
Excitation, maximum	15		VDC or VAC RMS
Input impedance	385±5 *		Ω
Output impedance	350±3 **		Ω
Insulation resistance	>5000		MΩ
Cable length	500kg-1t 8m, 1.5t-30t 15m	8m	m
Construction	Alloy Steel		

* 50t: 770±10Ω

**50t: 700±5Ω

All specifications subject to change without notice.

WIRING SCHEMATIC DIAGRAM



PROCESS WEIGHING CONTROL SOLUTIONS

Yunyan Electrical Technology Co., Ltd.

Tianhe District, Guangzhou CHINA Phone: +86 20 8550 3591 - Fax: +86 20 8550 3565
E-Mail: info@fouryweigh.com - Internet: www.fouryweigh.com